

## WHAT IS A POLL WATCHER?

A candidate, political party or political committee may ask someone to go to a polling place or early voting area and observe. This person is known as a poll watcher. The poll watcher observes the election process to see if any violation of the election laws occurs. If a violation occurs, the poll watcher is to refer the violation to the clerk of the election board. (F.S. 101.131)

## WHO MAKES UP THE ELECTION BOARD?

The clerk is in charge of the precinct and supervises the inspectors and the deputy. The inspectors assist the voters. The deputy is responsible for maintaining order and the enforcement of solicitation laws. (F.S. 101.131)

## WHAT QUALIFICATIONS ARE NEEDED TO BECOME A POLL WATCHER?

Each poll watcher shall be a qualified and registered voter of St. Lucie County. Each candidate, political party and political committee shall designate, in writing, prior to noon of the **second Tuesday preceding the election** poll watchers for each polling room. Designations of poll watchers for early voting areas shall be submitted in writing to the Supervisor of Elections at least **14 days before early voting** begins. (F.S. 101.131)

## WHERE DOES THE POLL WATCHER GET AUTHORITY AND APPROVAL?

The poll watcher gets his or her authority from F. S. 101.131.

Upon receiving a poll watcher application, the Supervisor of Elections shall approve or disapprove the applicant for early voting, no later than 7 days before early voting begins.

Poll watchers for Election Day polling rooms shall be approved or disapproved on or before the Tuesday before the election.

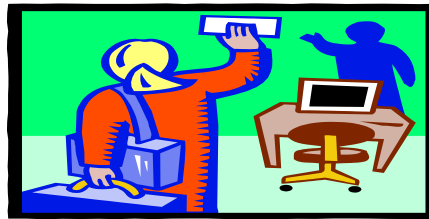
The supervisor shall furnish to each election board a list of poll watchers designated and approved for the early voting areas or polling rooms. (F.S. 101.131)

## WHO CANNOT BE A POLL WATCHER?

A candidate, sheriff, deputy sheriff, police officer or any law enforcement officer is not allowed to serve as a poll watcher. (F.S. 101.131)

## HOW MANY POLL WATCHERS ARE ALLOWED IN A POLLING PLACE?

Each candidate, political party and political committee may designate **one** poll watcher in each early voting area or polling place at any one time during the election. (F.S. 101.131)



## POLL WATCHERS CAN'T DO THE FOLLOWING:

The poll watcher should not interfere with or impede the conduct of any election. He/she should come no closer to the official's table or the voting booths than is reasonably necessary. The poll watcher is **not permitted** to speak to the voter, or the inspectors. **All questions must be directed to the clerk of the election board.** Poll watchers may not wear anything advertising candidacy or advocating for or against an issue. (F.S. 101.131)

## DOES THE POLL WATCHER NEED ANYTHING?

The poll watcher is responsible for supplying any necessary items or materials he or she will need at the polling place that day, including a folding chair if desired. (F.S. 101.131)

## WHAT ARE THE PRIVILEGES OF BEING A POLL WATCHER?

The main function of a poll watcher is to observe the occurrences at the polling room.

1. The poll watcher may execute his/her right to see that the ballot box is empty, if done before the casting of the first ballot.

2. A poll watcher may observe from a reasonable distance, the distribution of the ballot to the voter, and the depositing of the ballot into the ImageCast Evolution Voting Unit (ICE).

3. Upon the observance of what the poll watcher considers a violation, the poll watcher may challenge a voter's right to vote by stating his/her case to the election board. The challenge shall be in writing with an: Oath of a Person Entering Challenge F. S. 101.111. If a poll watcher challenges a voter's right to vote, the clerk or inspector shall immediately deliver a copy of the oath of the challenge to the voter. The challenged voter shall be allowed to cast a provisional ballot. Any elector or poll watcher filing a frivolous challenge of any person's right to vote commits a misdemeanor. However, electors or poll watchers shall not be liable for any activity or duty taken in good faith.

4. After the casting of all ballots, the poll watcher may observe the closing procedures at the polls. (F.S. 101.111) (F.S. 104.29) (F.S. 101.23)

## Important Dates For Poll Watchers to Remember

**General Election Early Voting:** Poll watchers names to be submitted to the Elections office – **October 8<sup>th</sup>**

**General Election:** Poll watchers names to be submitted to the Elections office – **October 23<sup>rd</sup>**

## **REMEMBER:**

### **SOLE AUTHORITY**

The Election Board and the Supervisor of Elections Office Staff are the sole authority in the polling place on Election Day. No other person may handle or touch election supplies and materials.

### **IDENTIFICATION**

Poll watchers must provide photo identification to the Clerk of the precinct when entering the polling location. The Clerk will check the identification against the list from the Supervisor of Elections Office. Poll watchers must wear the Poll Watcher Identification Badge provided by the Supervisor of Elections at all times while within the polling place.

### **QUESTIONS WHILE ON DUTY**

**Poll watchers may not interact with voters. All questions must be posed to the clerk for resolution.** Poll watchers will not be permitted to come closer than is reasonable necessary to the officials table or voting booths.

### **CELL PHONES AND MOBILE ELECTRONIC DEVICES**

Poll watchers can use mobile electronic devices subject to the following conditions:

- Must be set to produce no noise or a low vibration
- May not be used to take pictures or record conversations inside the polling room
- NO audible telephone conversation inside the polling room
- May not be used to create a disruption or disturbance in the polling room

### **CAMPAIGNING**

Poll watchers may not wear anything advertising a candidacy or advocating for or against an issue. Solicitation or any kind of campaigning must not take place in the polling place or within 100 feet of the entrance of the polling place during voting hours.

### **SUPPLIES/MATERIALS**

Remember to bring your own materials or necessities.

## **THE SUPERVISOR OF ELECTIONS**

The primary goal of the Supervisor of Elections is to help bring about a greater understanding of and participation in the electoral process.

For more information on election laws and procedures, write or call the Supervisor of Elections.

## **2018 ELECTION CYCLE**

### **General Election - November 6, 2018**

Voter Registration Deadline: October 9<sup>th</sup>  
Early Voting: October 22<sup>nd</sup> – November 4<sup>th</sup>  
Incl. Sundays, October 28<sup>th</sup>  
and November 4<sup>th</sup>

**Issued by:**  
**Gertrude Walker, CFS**  
**Supervisor of Elections**  
**St. Lucie County**  
**4132 Okeechobee Road**  
**Fort Pierce, FL 34947**  
**(772) 462-1500**  
**FAX (772) 462-1439**

**Email: [elections@slcelections.com](mailto:elections@slcelections.com)**

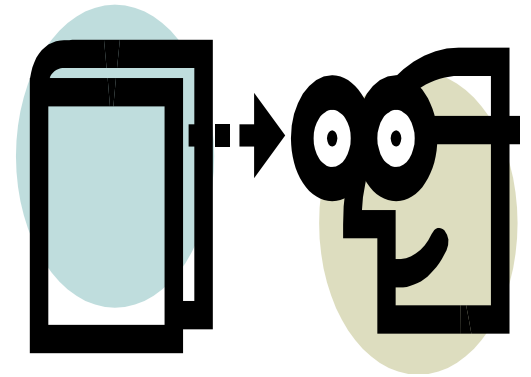
**Brochure written in accordance with:**  
**F.S. 101.23, 101.111, 101.131, 104.29**

---

# **Poll Watchers**

## **On The**

## **Watch...**



---

**Gertrude Walker, CFS**  
**Supervisor of Elections**  
**St. Lucie County**  
**4132 Okeechobee Road**  
**Fort Pierce, FL 34947**

---